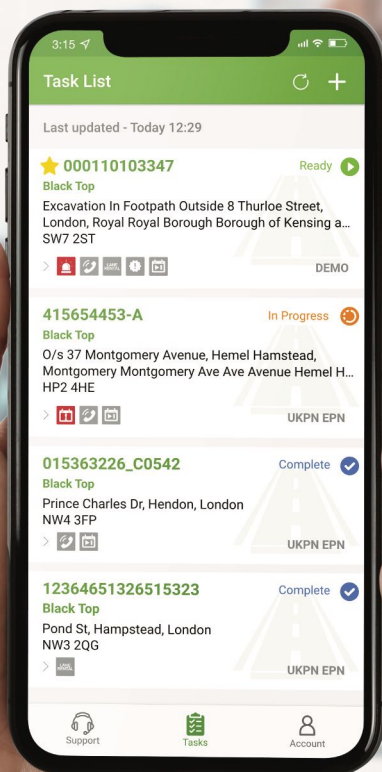




the smarter works
management solution



Task List

Last updated - Today 12:29

★ 000110103347 Ready

Black Top
Excavation In Footpath Outside 8 Thurloe Street,
London, Royal Royal Borough Borough of Kensing a...
SW7 2ST

415654453-A In Progress

Black Top
O/s 37 Montgomery Avenue, Hemel Hamstead,
Montgomery Montgomery Ave Ave Avenue Hemel H...
HP2 4HE

015363226_C0542 Complete

Black Top
Prince Charles Dr, Hendon, London
NW4 3FP

12364651326515323 Complete

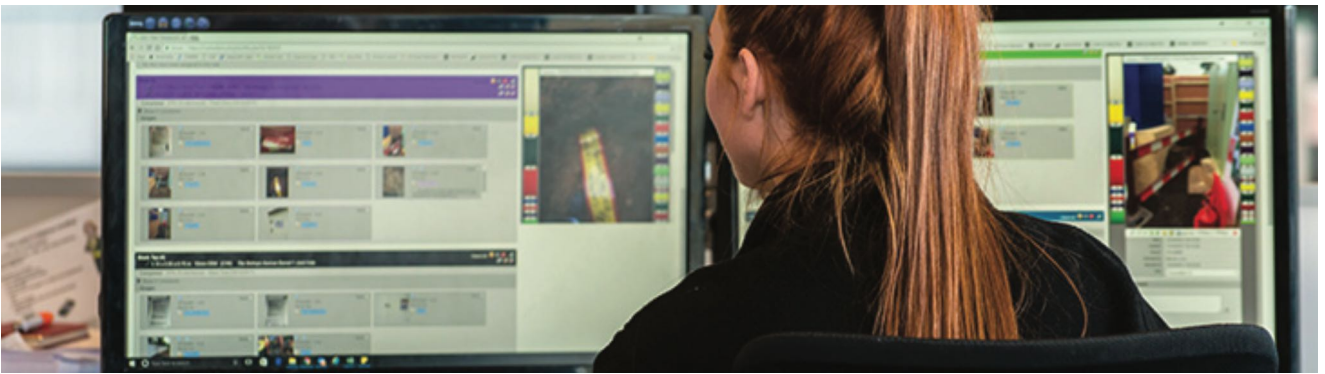
Black Top
Pond St, Hampstead, London
NW3 2QG

Support Tasks Account

Introduction

Ontrack is a works management system which provides companies in the construction, street works and utilities industries with significant benefits in the visibility, control and delivery of projects and jobs.

The modular solution provides contractors, clients and partners with a tool which, in addition to planning and managing works, takes, stores and reports photographic evidence and data covering every stage of a construction project or street works job.



Easily accessible

Ontrack is a cloud based solution which is secure, easy to deploy and hosted on a world class technology platform. It is cost effective and provides unlimited storage for data, video and images. Access Ontrack from anywhere with an internet connection.



Protects the business

When using Ontrack, the data, together with photographic and video evidence captured directly contributes to improved safety, significantly reduced fines, penalties, charges and compliance costs. Put simply, it helps protect the business.



Full transparency

Ontrack provides a single version of the truth. This gives clarity to all parties of what is actually happening on site. All system entries are fully auditable, date and time stamped.

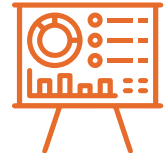
Real time operational tracking

Ontrack enables site and office based workers to submit photos, video and data in real time which can immediately be seen by managers, planners and other key enablers in the process. Projects are tracked through their entire lifecycle, including any re-works.



Encourages accountability

Use of Ontrack drives good behaviours from those involved in the works lifecycle. It makes them accountable for their part in the delivery which reaps productivity and commercial benefits. Accurate reporting and performance monitoring.



Quick to deploy and train

Ontrack is exceptionally quick to deploy into your business. Our proven model gets you up and running quickly and starting to reap the benefits with days. Online training modules mean less time out of the business for your staff.



Modular means you can start simply

Ontrack is a modular system which is available in four tiers. This means that you can start with a simple and affordable system yet be sure it will grow with your needs.

The great news is that simple does not mean basic. Our entry level Bronze tier still provides you with the functions you need to manage jobs, take photos and track progress!





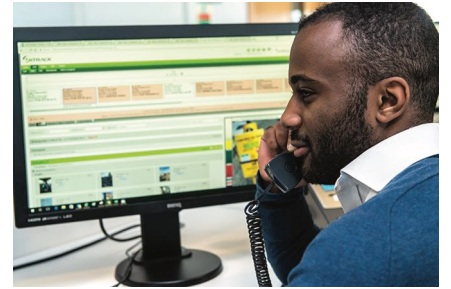
PLAN

The Ontrack solution supports detailed planning and scheduling throughout the job lifecycle. Tasks can be created and allocated to site operatives in real time.

End to End Job Life Cycle

Specifically designed to support an end to end job lifecycle, the Ontrack solution consists of a suite of three applications:

- ✓ Ontrack 2 Web
- ✓ Ontrack Mobile (iOS and Android)
- ✓ Ontrack Lite (iOS, Android and Windows)



Additionally, a Reporting portal provides analysis and operational data for compliance and performance management.

The main Ontrack 2 application is where projects are created and broken down into jobs and tasks. These are then planned out to resources and tracked through to completion. The system supports all stages of a construction or street works project allowing unlimited contracts, jobs, tasks and images.

The Ontrack system supports a seamless process, driving significant savings and efficiencies via right first time job delivery.

Our optional street works and quality compliance tools provide reassurance to clients and partners that works will be delivered to specification with evidence recorded at every stage.



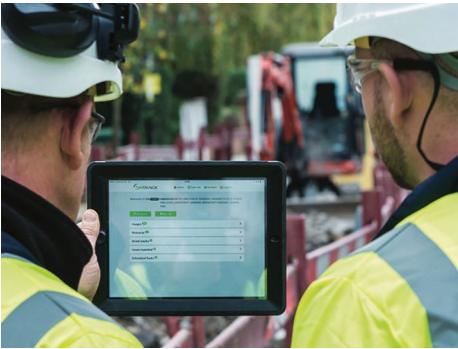
Ontrack applications support every stage of a project or job.



MANAGE

Ontrack is known for the quality of its photographic record and the visibility it provides all parties working on a project or job. For managers, both on-site and back at base, it provides a clear view of works progress in real time.

Operational Visibility



The Ontrack family of applications allows its users to view works carried out, whether it is at the start, in progress or when the job is completed.

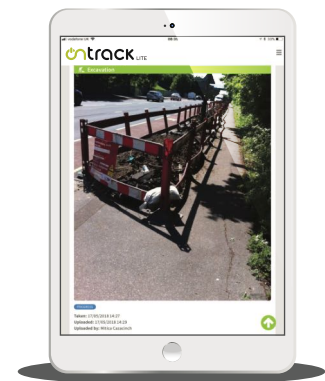
By having live updates on jobs, operational managers are able to identify potential issues that could occur and take action accordingly.

Another benefit of Ontrack's live updates is that planners and schedulers can quickly identify the status and when their teams will attend the next site. All Ontrack packages support Lane Rental, urgent and high priority works.

Supervisors & Team Leaders

Our companion job viewer app, Ontrack Lite, allows works supervisors and team leaders to view images and permit information on a job in real time.

Managers can view the full set of works photos and video helping them to identify whether they will need to attend site if issues have arisen.



In addition, Ontrack Lite can be used at site meetings to show customers, clients and highways authorities images of the works and discuss what has been carried out. Often queries can be resolved while on site, driving incredibly quick resolution timescales.





COMMUNICATE

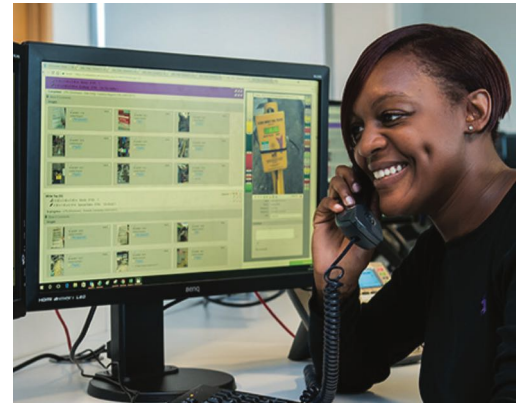
Ontrack's applications support clear and transparent communication during the works process. It binds together contractors, clients, partners and customers, keeping all informed throughout the job lifecycle.

Transparency for All Parties

Good communication is about being transparent with all parties about what is happening on the job. Ontrack keeps a full history of images, information and all planned and actual activities on each task. This can be viewed and discussed by all involved in the works.

Ontrack's powerful search function enables its users to find jobs using a variety of criteria. As a cloud based service we have unlimited storage for data, images and video.

Our optional Alerts module keeps key people informed regarding job status and provides a proactive way to manage issues. Ontrack stores photographic evidence, uploads and data covering every stage of the construction project or utilities job.



Customer Service



Ontrack's optional customer service module includes functionality to manage complaints, commendations and enquiries. It provides the ability for service and support staff to record all contact or enquiries raised.

The follow up communication can be monitored by the agent and they can assign a task to supervisors or managers to attend site to rectify any issues raised, if required.

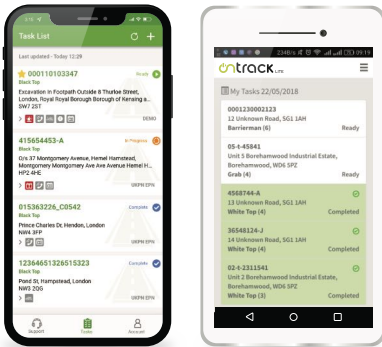




DELIVER

The power of a works management system really shows with how it supports delivery on site. Ontrack's tools are designed to be used in construction and street works environments by workers and operatives who need to quickly update them and move on to the next task.

On Site Solutions



Ontrack Mobile is an app (for iOS and Android) designed for operatives to use on site. The app was created to be easy to follow and enable quick capture of photos, video and job data.

When a scheduler plans works to their teams through Ontrack 2 the task is sent to the operatives Ontrack Mobile app.

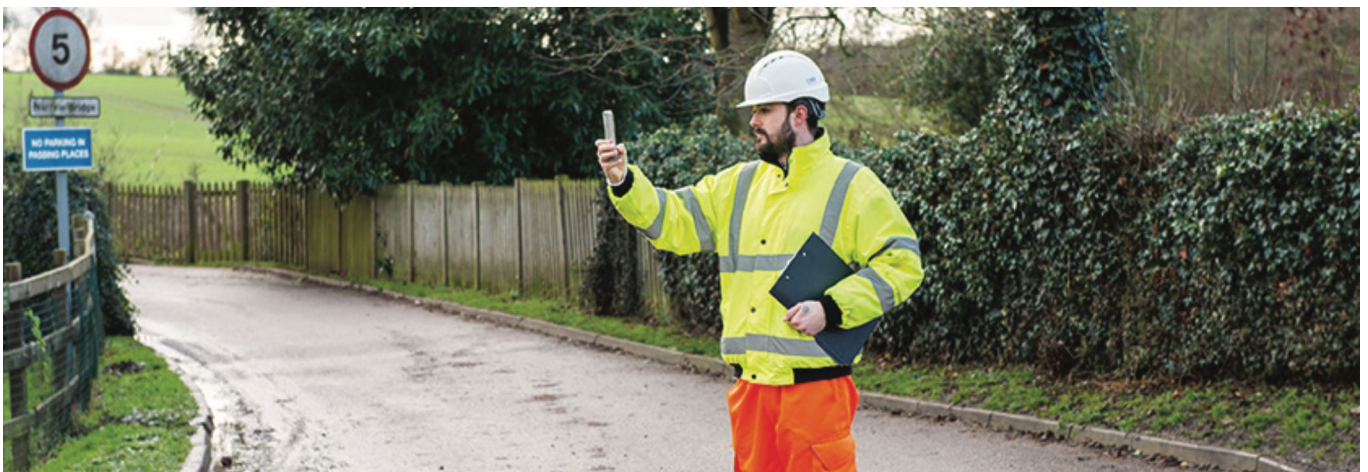
The operatives will receive the planned tasks and the street works or permit information they need to carry out their works from start to finish.

High Quality Photography

Ontrack effortlessly accumulates all images and video that are sent in from the mobile apps. When a user recalls a job in Ontrack, it will instantly display high resolution photography plus associated meta information. This includes video clips which are increasingly used in the construction industry to record evidence of completion and support the commercial process.



Ontrack has the ability to import images from client and other contractor systems thereby supporting a true end to end job lifecycle view of works.



Modular Options

Ontrack is a modular system, available in three tier options plus an Enterprise plan. Each one provides a significant level of functionality yet allows the system to grow with your business.

| | Bronze | Silver | Gold |
|-----------------------------------|--------|--------|------|
| Functions & Modules | | | |
| Contracts & jobs | Yes | Yes | Yes |
| Basic task allocation | Yes | Yes | Yes |
| Photo & video capture | Yes | Yes | Yes |
| Task workflow & tagging | Yes | Yes | Yes |
| Safety & customer functions | Yes | Yes | Yes |
| Subscriptions & email alerts | Yes | Yes | Yes |
| Document storage | | Yes | Yes |
| Compliance auditing & tagging | | Yes | Yes |
| Task questions & questionnaires | | Yes | Yes |
| Operative workflow | | Yes | Yes |
| Geographical planner | | Yes | Yes |
| Reinstatement quality certificate | | | Yes |
| Customer care module | | | Yes |
| Defects module | | | Yes |
| Interims module | | | Yes |
| Charges module | | | Yes |
| Delays module | | | Yes |
| Commercial module | | | Yes |
| Skills module | | | Yes |
| Reporting & MIS | | | |
| Reporting - standard | Yes | Yes | Yes |
| Reporting - intermediate | | Yes | Yes |
| Business Intelligence (BI) module | | | Yes |
| Custom reports | | | Yes |
| Applications | | | |
| Ontrack 2 web | Yes | Yes | Yes |
| Ontrack Mobile iOS | Yes | Yes | Yes |
| Ontrack Mobile Android | Yes | Yes | Yes |
| Ontrack Lite | Yes | Yes | Yes |

Modular Options

Enterprise Edition

In addition to the three tier options detailed overleaf, Ontrack is available in Enterprise Edition. This includes bespoke features which will make Ontrack your branded, enterprise wide works management system, integrated with other systems to support end-to-end workflow.

Features include:

- Dedicated application instance
- Custom branding across all apps
- Integrations with other enterprise systems
- Data intelligence and extensive custom reporting
- Extended support, up to 24/7, if required
- Process integration consultancy, if required
- Dedicated account manager

Contact us to understand more and to receive a custom proposal based on your specific requirements.



The Ontrack team will be pleased to provide a demonstration of the system, highlighting each function. The demonstration will cover office based and operative functions showing how Ontrack can work across the whole job lifecycle.

Please contact us for more information and an in-depth discussion of your requirements on 020 8166 9166 or at sales@ontrackms.com



Ontrack Management Solutions Ltd

Tel: 020 8166 9166
Email: sales@ontrackms.com

Office Hours
Mon-Fri: 7:00-17:00
Sat: 7:00-12:00 (Support calls only)



FS669159

ontrackms.com